



Telling the Time

Five-Minute Intervals



At what time do you...



wake up?



go to school?

have your lunch?



go home?

eat dinner?



do your homework?

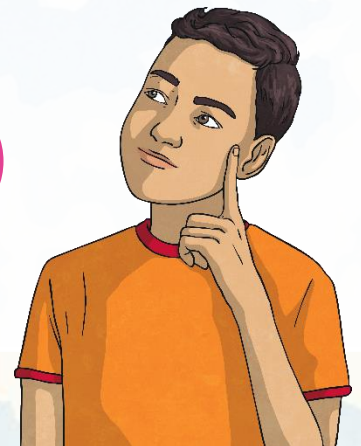
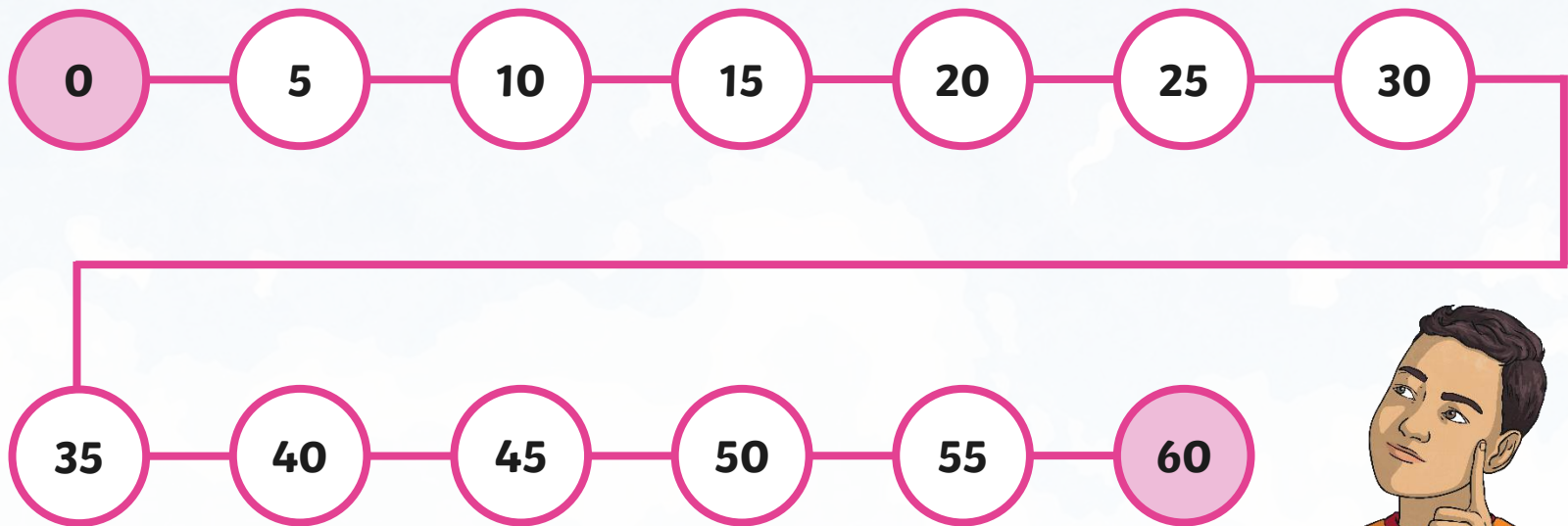
go to bed?



Telling the Time

When we are telling the time, it is really important to be able to count in 5s.

Can you count in 5s from 0 to 60?



Telling the Time

The big hand on the clock counts the minutes and is called **the minute hand**.

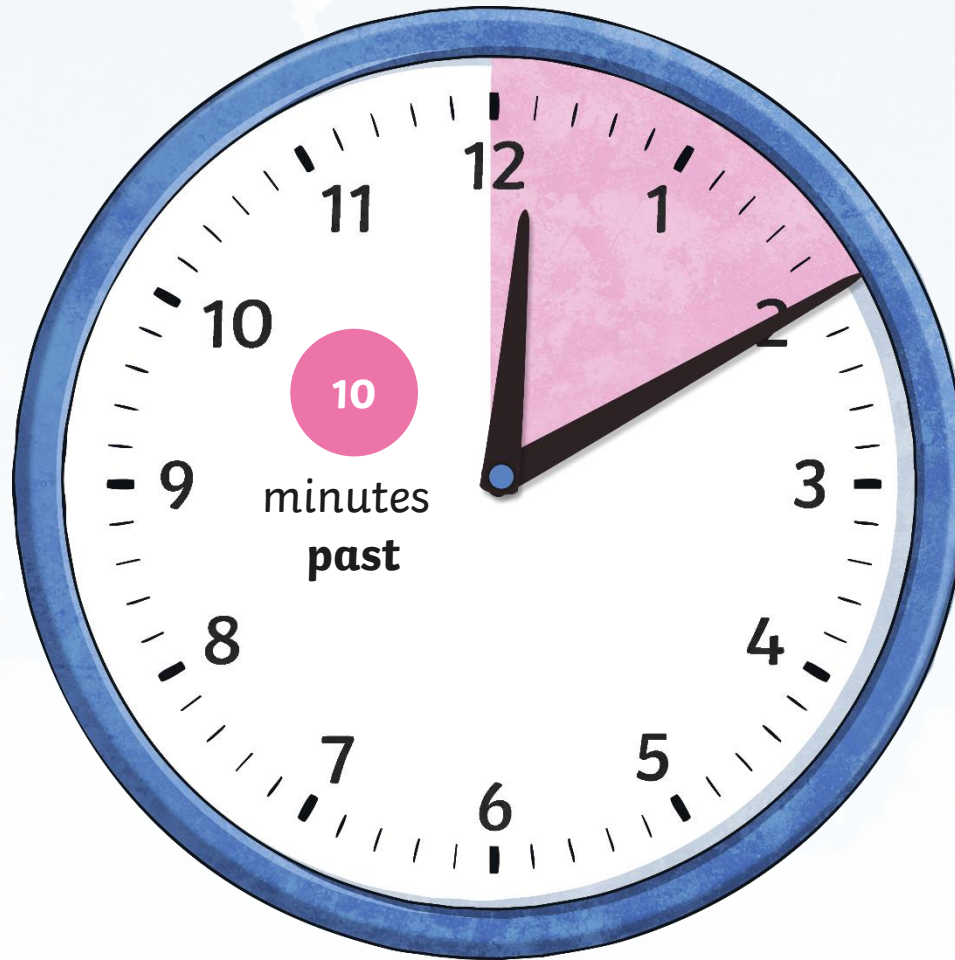
We are going to look now at the minutes **past** the hour.



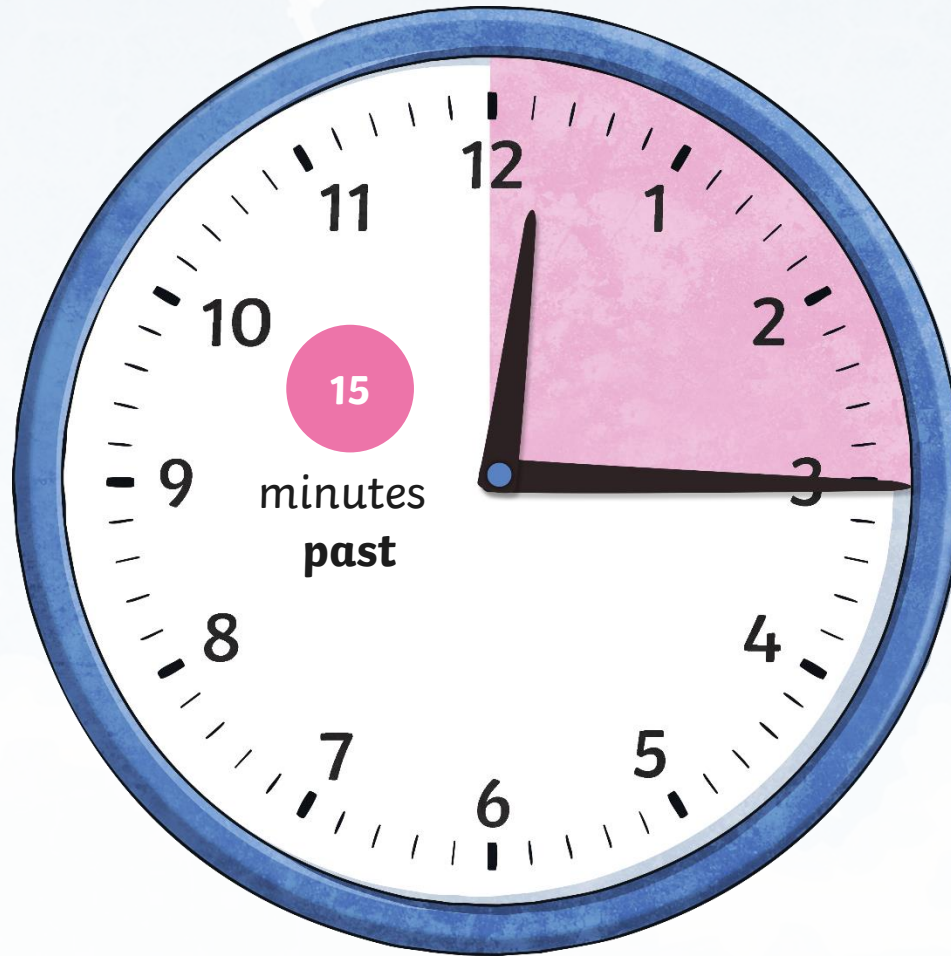
When the big hand points to 1, it means...



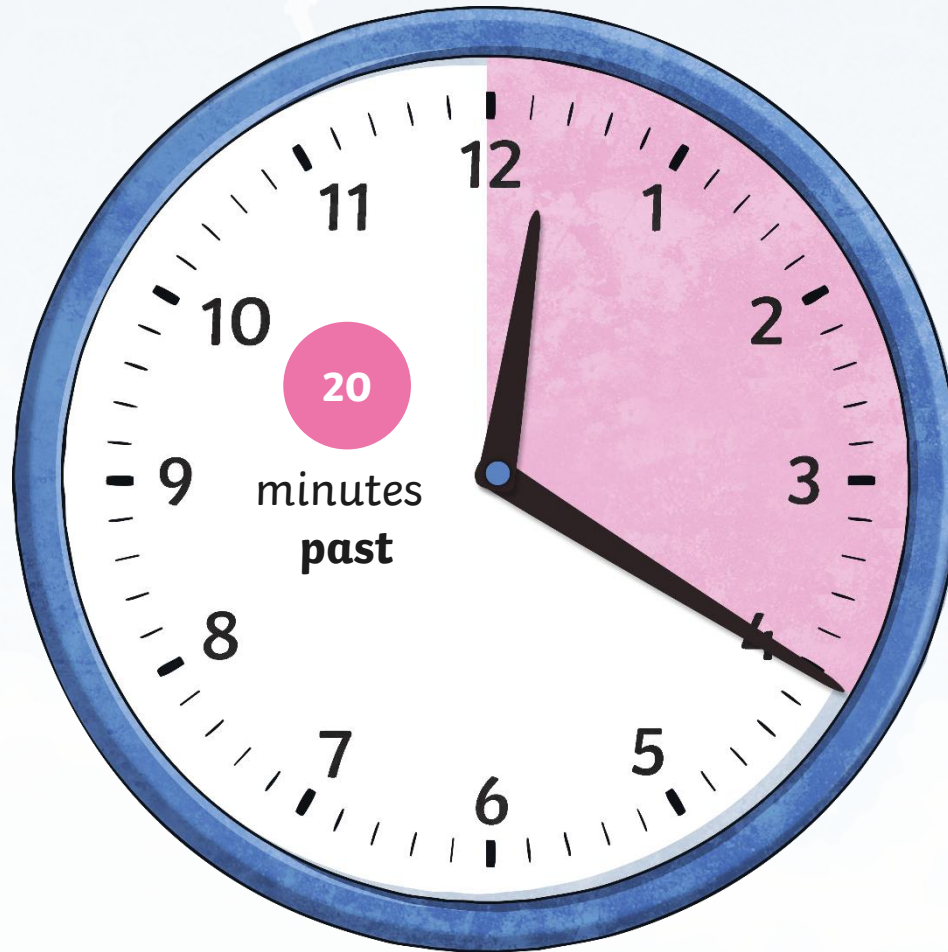
When the big hand points to 2, it means...



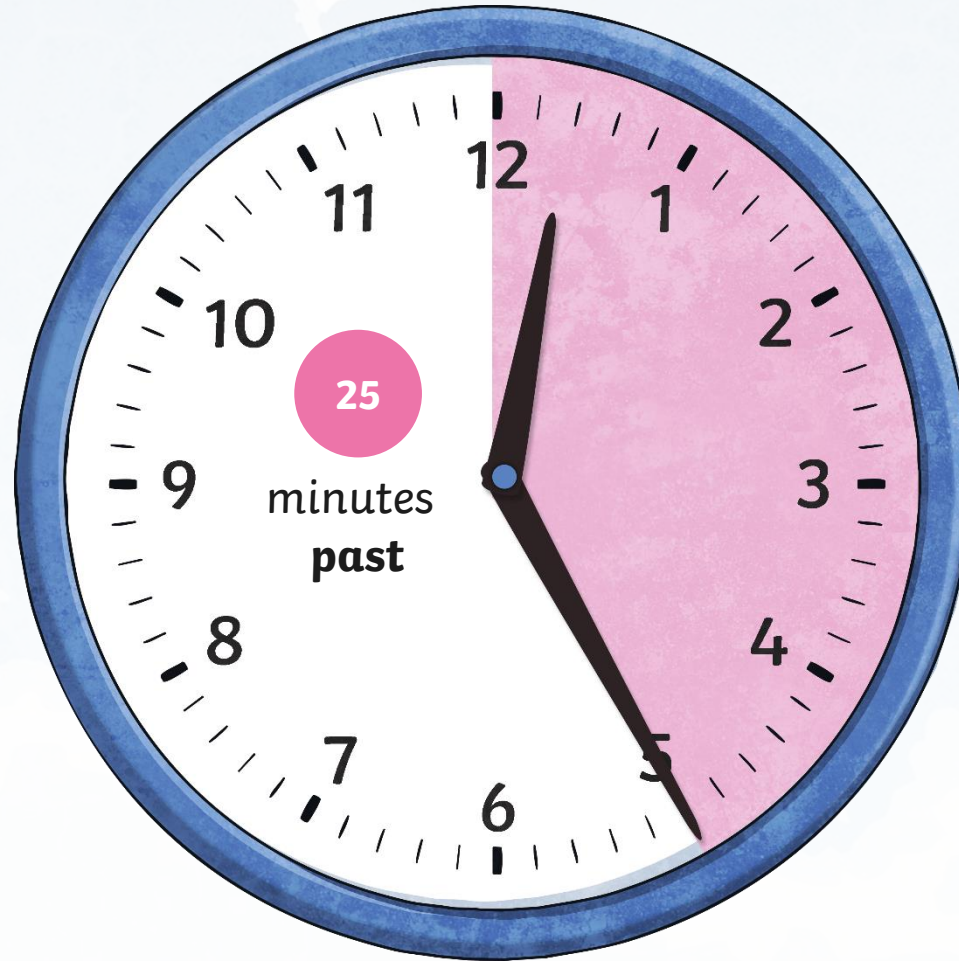
When the big hand points to 3, it means...



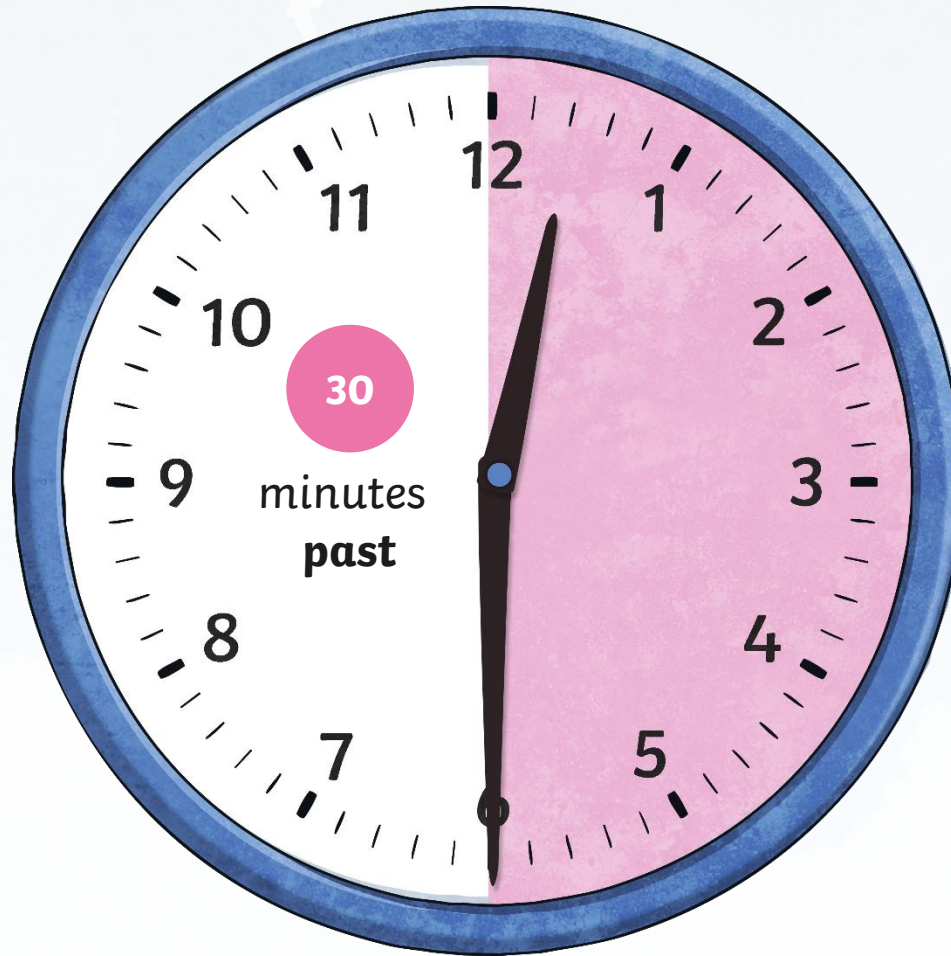
**When the big hand points to 4,
it means...**



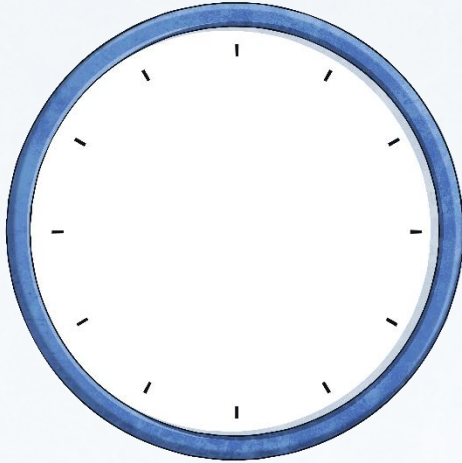
When the big hand points to 5, it means...



**When the big hand points to 6,
it means...**



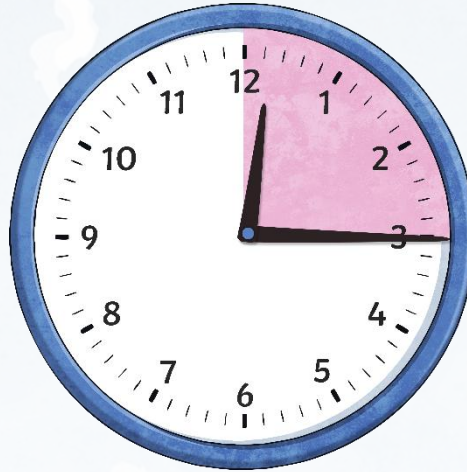
Telling the Time



How many minutes are in an hour?

60 minutes

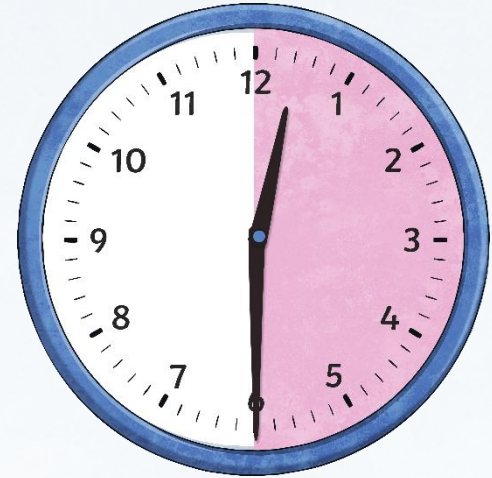
= an hour



Why is 15 minutes called 'quarter past'?

15 minutes

= a quarter of an hour



Why is 30 minutes called 'half past'?

30 minutes

= half an hour

What Time Does it Say on the Clock?



ten past four

or

04:10



What Time Does it Say on the Clock?



twenty past seven

or

07:20



What Time Does it Say on the Clock?



half past nine

or

09:30



What Time Does it Say on the Clock?



15 minutes past eleven

or

quarter past eleven

or

11:15



Telling the Time

Now let's look at the other half of the clock.
We are going to look at the minutes **to** the next hour.



When the big hand points to 7, it means...



**When the big hand points to 8,
it means...**



**When the big hand points to 9,
it means...**



**When the big hand points to 10,
it means...**



**When the big hand points to 11,
it means...**



**When the big hand points to 12,
it means...**



What Time Does it Say on the Clock?



15 minutes to three

or

quarter to three

or

02:45



What Time Does it Say on the Clock?



25 minutes to five

or

04:35



What Time Does it Say on the Clock?



20 minutes to one

or

12:40

**Look at the clock in your room.
What time is it now?**

Now complete the time worksheet.



